

QWT112-30 WR-112, 30W

Features:
* Low VSWR

Applications:
* Transmitters
* Antennas
* Laboratory Test
* Impedance Matching

Electrical

Frequency: 6.57~10GHz
Average Power: 30W
VSWR: 1.2 max.

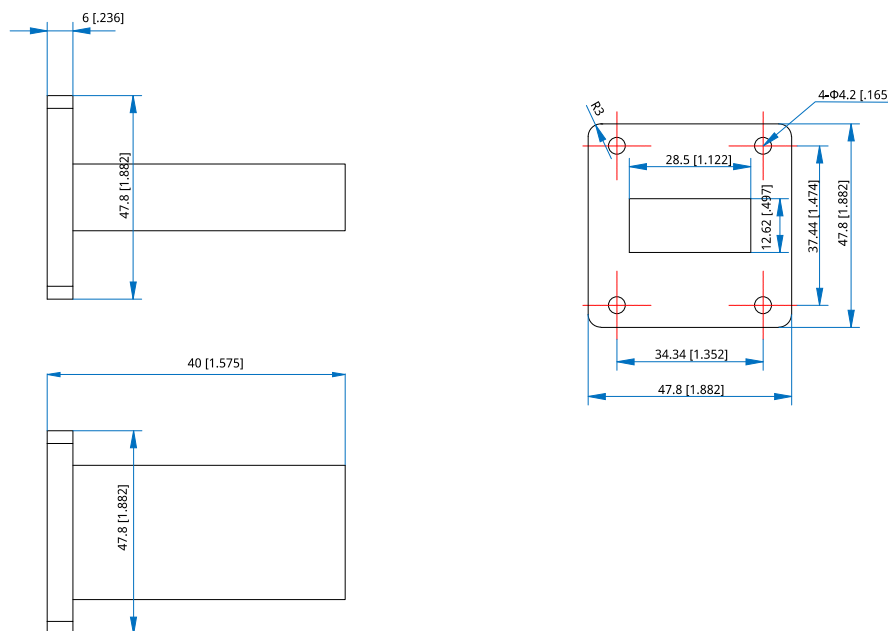
Mechanical

Waveguide Size: WR-112 (BJ84)
Flange: FBP84

Environmental

Temperature: -55~+125°C

Outline Drawings



Outline A

Unit: mm [in]
Tolerance: $\pm 0.5\text{mm}$ [$\pm 0.02\text{in}$]

How To Order

QWT112-30-Y-Z

Y : Material

Z : Flange type

Material naming rules:
A - Aluminum (Outline A)

Flange naming rules:

1 - FBP84 (Outline A)

Examples:

To order a small size waveguide termination, WR-112, 30W, Aluminum, FBP84, specify QWT112-30-A-1.

Customization is available upon request.